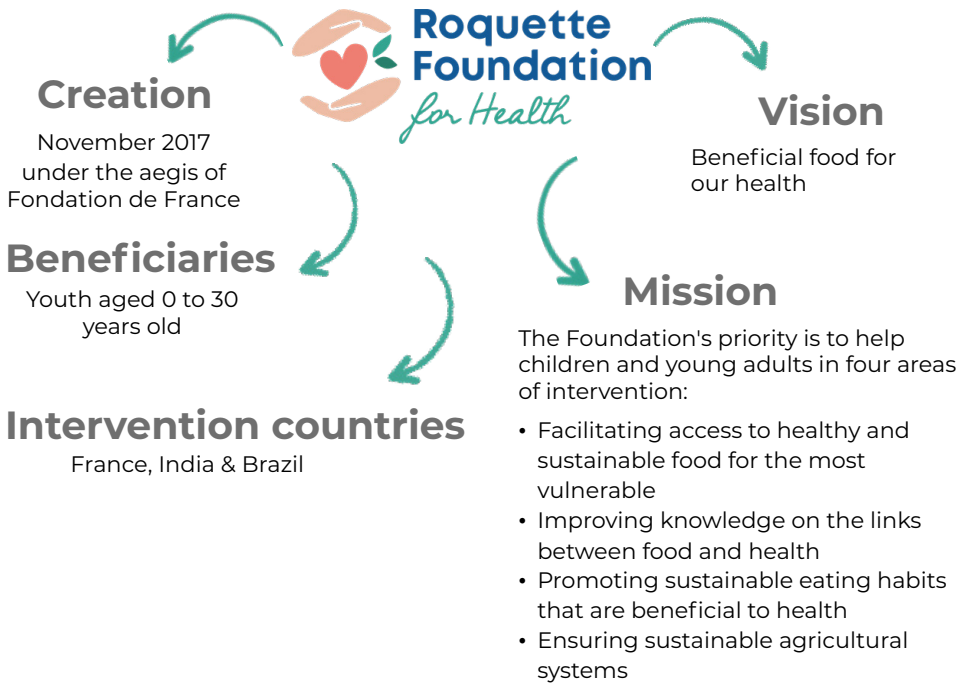


THE GUIDE

For project holders

Guided by the values of authenticity, well-being, excellence, and anticipation of the Roquette group, the Roquette Foundation promotes healthier lifestyles and shares good nutrition habits through supported projects in the fields of food, nutrition, and health.



THE ORGANIZATION

The team



Anne LAMBIN

Head of the Roquette Foundation



Sophie ROBIQUET-BASSEMENT

Projects Coordinator

The executive committee

Internal members

Édouard ROQUETTE	Chairman of the Foundation and the Roquette Group
Cyrille ROQUETTE	Family member
Victoria MABILLE	Family member
Xavier GALLIOT	Head of Sustainability
Pascal GRANSEIGNE	Transformation stream leader

Dr Delphine LEY
(MD, PhD) University Lecturer in
Pediatrics – Lille University Hospital

Clémentine HUGOL-GENTIAL
Professor of Information Communication
– University of Bourgogne

Bastien DOGNIN
Co-founder of the company "Les Paniers de Léa"

External members

SUPPORTED PROJECTS

The Foundation supports

- Projects in line with its mission: help children and young adults in four areas of intervention:
 - Facilitating access to healthy and sustainable food for the most vulnerable
 - Improving knowledge on the links between food and health
 - Promoting sustainable eating habits that are beneficial to health
 - Ensuring sustainable agricultural systems
- **Concrete achievements**
- Projects with **structured and balanced budgeting**
- **Co-financed projects** to ensure their sustainability
- **Collective actions** in the interest of the **common good**

The Foundation does not support

- **Lobbying** activities
- **Sponsorship**
- Projects with **religious, confessional, or political character**
- Projects **not complying with standards**: human rights and children's rights, right to work, health and safety of individuals, environmental protection...
- **Sports events**
- **Individual initiatives** such as theses...
- **Scholarships**, research grants, support for school trips...

THE PROJECT

As a project holder, what do I need to commit to?

- To communicate the **project's budget forecast** to the Foundation
- To **justify the use of the allocated grant** (reports, annual statements, etc.)
- **To evaluate and measure** the project's impact (during and afterward)
- To keep the Foundation informed of **the project's progress**
- To adhere to **communication guidelines**

What are the eligibility criteria?

For a project to be supported by the Foundation, it must:

- Be carried out by a **non-profit organization**
- Serve the **general interest** (association, NGO, foundation, public institution...)

COMPLETING THE APPLICATION FORM

Identification of the organization

It is the identity card of your organization.

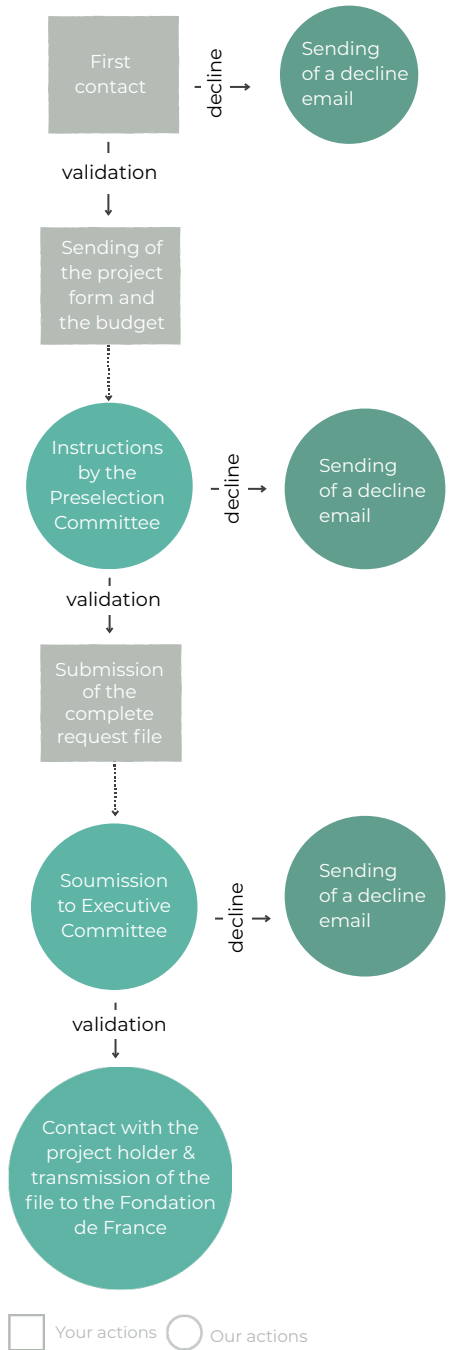
The **essential information** to understand its structure is included there.

Following the discussions you will have had with the Roquette Foundation team, you will be able to register your project in the intervention axis that best corresponds to it.

General presentation

Concretely, how does your organization operate on a daily basis? Here, provide more information about **its activities, scope of intervention, target beneficiaries, organization, budget, and main financial partners.**

THE PROCESS OF A SUPPORT REQUEST



The project presented to the Roquette Foundation

For the Preselection Committee, and subsequently, the Executive Committee to understand the project you are presenting to the Roquette Foundation, explain here the project :

- Its **name**
- **Scope of action**
- What led your organization to **conduct this project** (social, economic context, studies...)
- **Summary**: these 10 lines will allow the Foundation's experts to grasp your project at a glance: be concise and impactful!
- **Beneficiaries**: age, geographical area, specificities
- **Contribution** to beneficiaries: in the long term, what will your project enable for the beneficiaries? How is it different?
- **Timeline**: Based on the project's duration (and the duration of support requested from the Foundation), what is the project's timeline in broad terms?
- **Impact**: How do you justify the project's impact on the beneficiaries? How does your project fit into the long-term perspective?
- Detailed **budget** specific to the project

ROQUETTE GROUP



Roquette is a global leader in sustainable plant-based solutions, driving innovation and strong partnerships that are shaping the future of nutrition, health, and bioindustry.

The company harnesses natural resources such as wheat, corn, seaweed, and cellulose to craft high-performance ingredients used in everyday foods, oral medications, advanced biopharmaceuticals, and a range of bio-based products.

A family-owned company with over 90 years of expertise and 11,000 employees, Roquette serves clients in over 150 countries and is committed to creating lasting value for customers, patients, consumers, and society.

Together, we turn the potential of nature into the essentials of life.

COMMUNICATION RULES

THE FOUNDATION

Any natural or legal person associated with Roquette Foundation for Health may use the Roquette Foundation for Health name in their communications or informational materials. Such use must be subject to prior validation by Roquette Foundation for Health.

The use of the Roquette Foundation for Health name must be linked to a communication or informational action in favor of Roquette Foundation for Health and its relationship with the project sponsor.

ROQUETTE FOUNDATION LOGO

Any natural or legal person associated with Roquette Foundation for Health may, in accordance with the pre-established charter, use the Roquette Foundation for Health logo in its various forms. Such use must be subject to prior validation by Roquette Foundation for Health in order to check the conformity, consistency, and timing of the communication in relation to the communication established by the project sponsor.

The use of the Roquette Foundation for Health logo must be linked to a communication or informational action in favor of Roquette Foundation for Health and its relationship with the project sponsor.

CONTACT US

Tel. : +33 (0)3 28 07 60 00

www.roquette.com

fondation@roquette.com

 [Fondation Roquette pour la Santé](#)



Fondation Roquette pour la Santé
101 Avenue de la République
CS 80213
59564 La Madeleine Cedex